

# CAWO MMS-FA X-Ray Cassettes



the economic cassette line

 **Solutions**

## **CAWO MMS-FA Cassette ...the economic version...**

CAWO has a long tradition in the production of X-ray cassettes.

To complete our wide range of plastic ABS cassettes we now offer an aluminium cassette with foam compression.

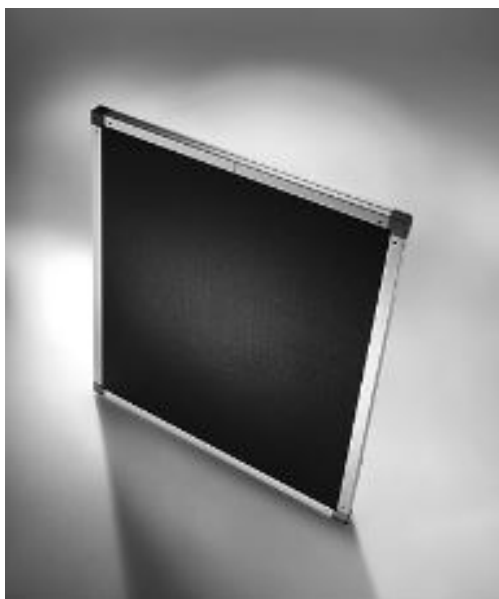
That is an economic version....

The CAWO MMS-FA Cassette is made of grey coloured aluminium.



### **ID window**

CAWO can, if desired, supply cassettes with an ID window. With the CAWO ID Camera or with a similar identification camera you can easily specify all necessary patient data onto the film.



## Grids

The mounting of anti-scattering grids is only possible if mentioned at ordering.

## Thickness of cassette

MMS-FA cassettes are available in 2 thickness-versions.

- Standard application (no grid): 14 mm
- Cassette with mounted grid: 16 mm

## Metric

13 x 18 cm	30 x 30 cm
18 x 24 cm	30 x 35 cm
15 x 30 cm	30 x 40 cm
24 x 24 cm	35 x 35 cm
15 x 40 cm	35 x 43 cm
24 x 30 cm	40 x 40 cm
18 x 43 cm	30 x 60 cm
20 x 40 cm	30 x 90 cm
	30 x 120 cm

## Imperial

13 x 18 - 5 x 7 in
20 x 25 - 8 x 10 in
18 x 43 - 7 x 17 in
24 x 24 - 9,5 x 9,5 in
25 x 30 - 10 x 12 in
30 x 30 - 12 x 12 in
28 x 35 - 11 x 14 in
35 x 35 - 14 x 14 in
35 x 43 - 14 x 17 in

6 x 12 in	12 x 15 in
6 x 15 in	14 x 36 in
14 x 51 in	

Further formats can be made. Please ask our team.

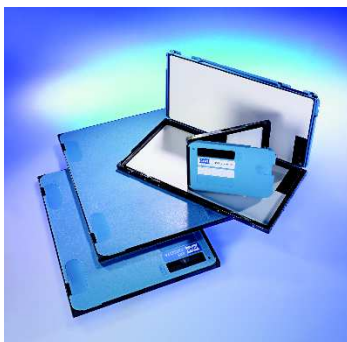
Optional US identification window with mechanical lock is available for formats marked in **BLACK**.

Exposed area on film: 70,5 x 23,5 mm

## Business Contact:

CAWO Solutions  
P.O. Box 11 29  
D - 86521 Schrobenhausen  
Phone: (++49) 8252 9109-21  
Internet: [www.cawo.com](http://www.cawo.com)  
E-mail: [cawo@agfa.com](mailto:cawo@agfa.com)

CAWO cassettes comply with the requirements of Regulation (EU) 2017/745 relating to medical devices and carry the CE mark. They are in conformity to the international standard DIN EN ISO 13485, 14971, 15223-1 and 4090.



A wide range of secondary radiation grids, **CAWO ABS Cassettes**, blue and green-emitting intensifying screens, accessories, equipment ensure tailor made solutions for every radiologic application.

